

State of Wyoming Corner Record

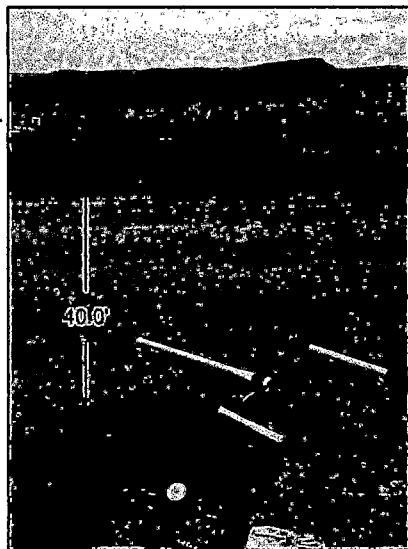
(In compliance with the CORNER PERPETUATION AND FILING ACT, Wyoming Statutes, 2013 Section 33-29-901 through 33-29-910, and the Rules and Regulations of the Board of Professional Engineers and Professional Land Surveyors)

Reverse side of this form may be used if more space is needed.

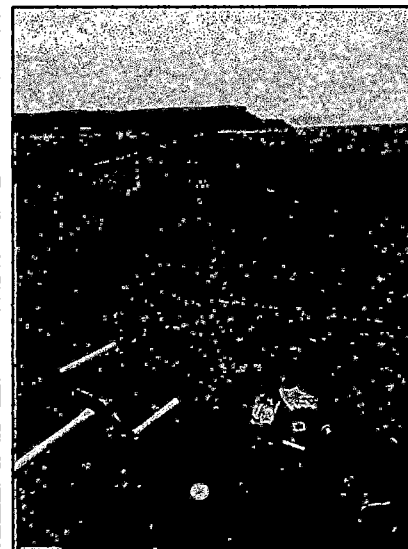
Record of original survey and citation of source of historical information (if corner is lost or obliterated). Description of corner monumentation evidence found and/or monument and accessories established to perpetuate the location of this corner. Sketch of relative location of monument, accessories, and reference points with course and distance to adjacent corner(s) (if determined in this survey). Method and rationale for reestablishment of lost or obliterated corner.

Record: Red Sandstone - 18"x12"x5"
 Found: Corner falls in Laramie County Road 161
 Set: 3/4" Aluminum Cap on 5/8"x24" Rebar at projected
 Intersection of two old fencelines running East and South.
 See Photo Ties:

Basis of Bearing: OPUS Rapid Static
 Grid Bearing & Distance 3-02-2020
 Combined Scale Factor 0.99978491

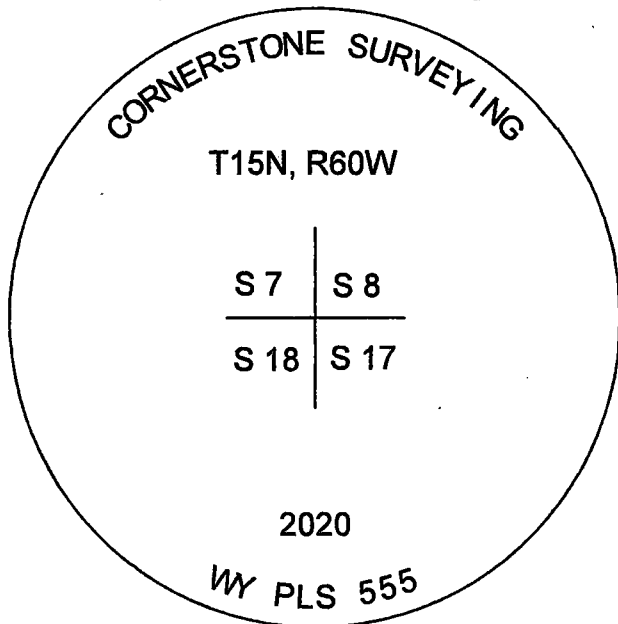
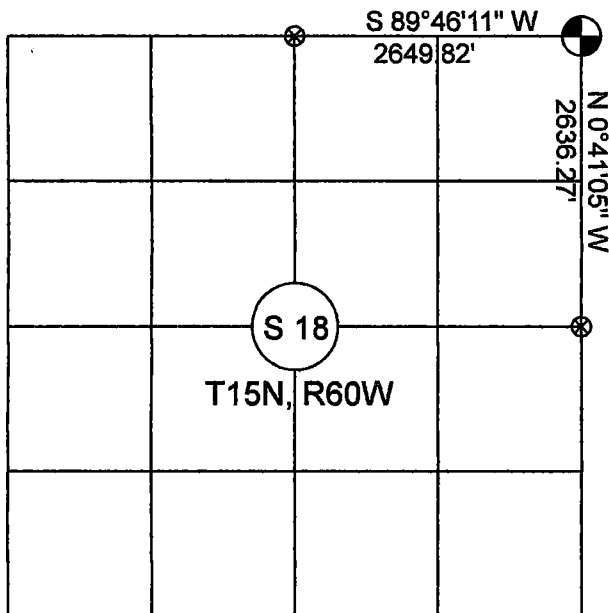


Looking East



Looking South

Monument location

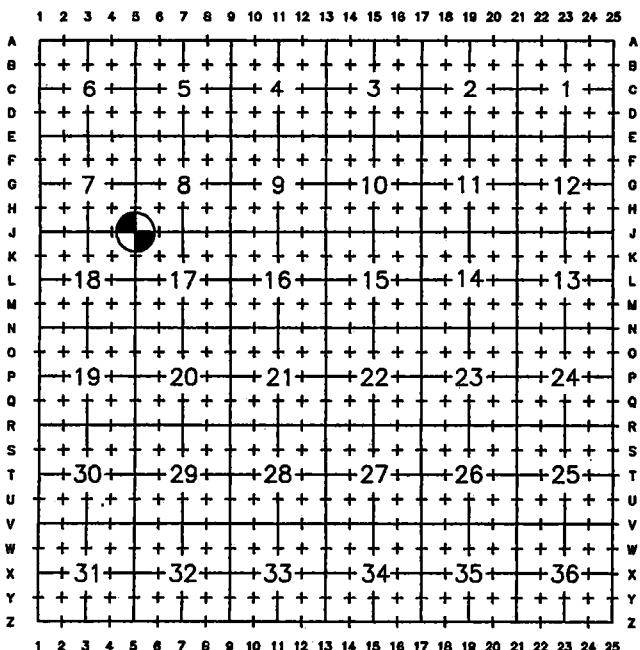


Monument Inscription

Date of Field Work: 5-14-2020

Office Reference: 2019-8 Anderson

Cross Index Plat



Firm/Agency, Address
 Cornerstone Surveying Company
 4005 Snyder Avenue
 Cheyenne, Wyoming 82001
 307-421-9932
 dennieandbarb@gmail.com

This corner record was prepared by me or under my direction and supervision.

SEAL & SIGNATURE



RECP #: 796271
 RECORDED 12/4/2020 AT 2:36 PM BK# 2708 PG# 589
 Debra K. Lee, CLERK OF LARAMIE COUNTY, WY PAGE 1 OF 1

Corner Name NE section 18 Section 18, T 15 N, R 60 W, 6th P.M. Cross-Index No.: J-5

County: Laramie County, Wyoming